



MONTHLY MEMBERSHIP PROGRESS REPORT

District 325A1

Results as of: 1/31/2017

GMT: NAZMUL HAQUE

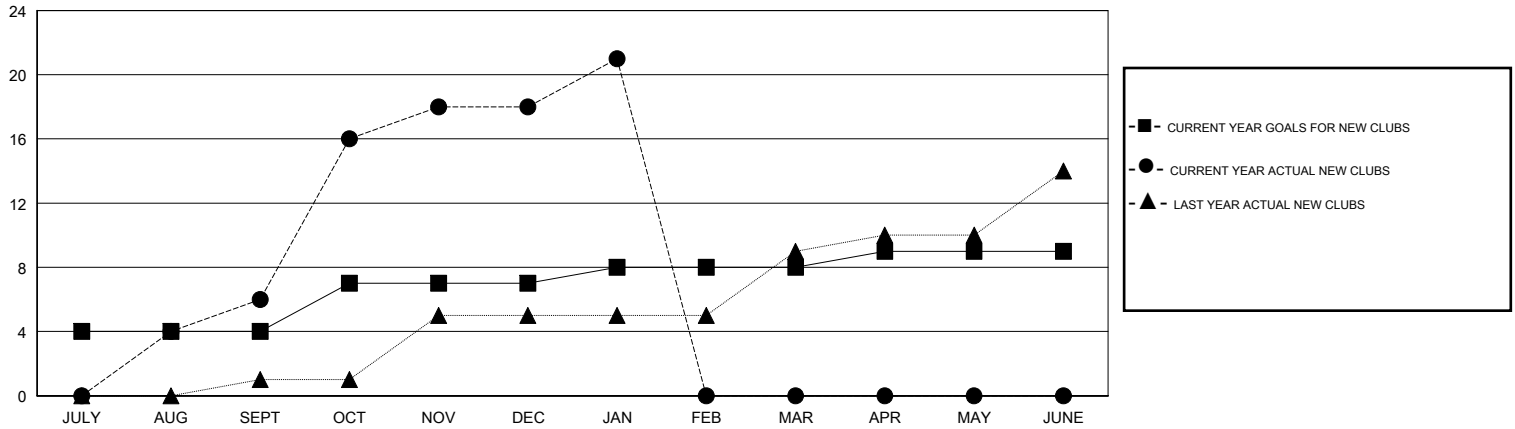
LOCATION NEPAL

GMT CA

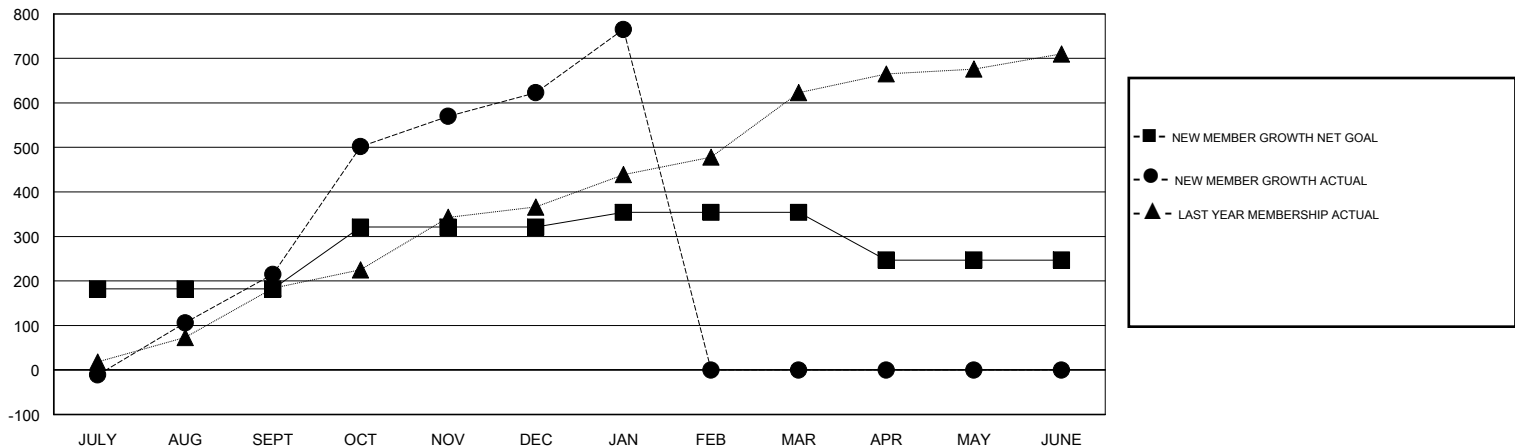
Clubs			
RESULTS FOR 2016-2017			
QUARTER	NEW CLUB GOAL	NEW CLUBS	DROPPED CLUBS
JULY/AUG/SEPT	4	6	0
OCT/NOV/DEC	3	12	0
JAN/FEB/MAR	1	3	0
APR/MAY/JUNE	1	0	0

Members			
RESULTS FOR 2016-2017			
QUARTER	NEW MEMBER GROWTH NET GOAL (not reinstated or transfers)	NEW MEMBER GROWTH ACTUAL (not reinstated or transfers)	DROPPED MEMBERS ACTUAL (including transfers)
JULY/AUG/SEPT	182	371	156
OCT/NOV/DEC	139	475	67
JAN/FEB/MAR	33	178	36
APR/MAY/JUNE	-107	0	0

GOALS AND ACTUAL NEW CLUBS CUMULATIVE



GOALS AND ACTUAL MEMBERS CUMULATIVE



DROPPED CLUBS: 0	88 CLUBS OF 126 ADDED 1 OR MORE NEW MEMBERS	<u>GENDER DISTRIBUTION</u>	
DROPPED MEMBERS		MALE	2,889 (73.77%)
DECEASED	3	FEMALE	1,027 (26.23%)
CLUB CANCELLED	0	TOTAL FAMILY UNIT MEMBERS	1,931
OTHER	256	FAMILY MEMBERS PAYING HALF DUES	1,222
TOTAL	259	CLICK HERE FOR CUMULATIVE MEMBERSHIP DATA	